



## WEEKLY OPPORTUNITIES NEWSLETTER

YEARS 7 & 8

w/c 16th January 2023



Dear Student/Parent/Carer,  
**Recording interactions on Unifrog**

Could you let Mrs Farmer know if you take part in any virtual or in person opportunities advertised in this Newsletter please? It is important that young people keep an electronic record of all the interactions you have with Further Education, Higher Education and employers. Please email [ffarmer@toothillschool.co.uk](mailto:ffarmer@toothillschool.co.uk) with the date of the activity and the name of the activity.

Enjoy

The Toot Hill Careers Team

Use the Contents section to skip to the information relevant for you. You can use the 'Back to Top' button to get back to this Contents section.

### Contents

|  |   |
|--|---|
| Career Of The Week .....                           | 2 |
| Family support worker .....                        | 2 |
| Subject of the week .....                          | 5 |
| National Apprenticeship Week / ASK programme ..... | 6 |
| YEAR 8 ONLY OUTREACH NEWS .....                    | 8 |

## Career Of The Week

# Family support worker



### What you'll do

Your job will vary depending on the needs of the family you're working with. Families are known as 'clients' in support work. Difficulties facing your clients could include:

- drug or alcohol addiction
- a parent in hospital or prison
- marital or financial difficulties
- a child or parent with a disability
- problems accessing services due to language barriers

You'll work with a social worker to plan and provide the support your client needs, like helping them improve their home management or parenting skills.

You may show parents how things can be done, then support them until they can do these things on their own.

In emergency situations, like when a single parent is going into hospital, you may move into your client's home for a short time to look after the children until other care is found. You may also help social workers assess a family's needs when a child has returned home after being in care.

Record relevant activities you've already done on the [Activities tool](#)

2

[Back to Top](#)

## Working hours and environment

---

You'll usually work around 37 hours a week. You may need to be available early in the morning, during the evening and at weekends.

You'll work with families in their own homes, attend meetings and go into the office to write case notes and consult colleagues.

You may occasionally need to be present in court sessions dealing with care orders for children.

## Career path and progression

---

With experience and qualifications you could focus on a particular area, like working with people with disabilities. You could also progress to team leader (managing a group of support workers) or become an assistant manager of a family centre or refuge.

Experience in family support may help if you want to move into social work.

## Skills required

---

You'll need:

- the ability to communicate sensitively and effectively with children and adults
- the ability to build good relationships with families that may be unfriendly at first
- the ability to help parents develop the skills they need to run their home
- a non-judgmental approach
- language skills for some jobs

Got evidence of these skills? Record your examples on the [Skills tool](#)

## Entry requirements

---

You'll usually need a qualification in childcare, social work, social care, counselling, youth work, or education.

Most employers will also want you to have some practical experience. You could get this through paid or voluntary work with children, young people, and their families in places like:

- children's homes
- nurseries
- family refuge centres
- probation services

- family community centres
- mental health services
- youth projects

You'll need to pass background checks by the [Disclosure and Barring Service \(DBS\)](#).

### Related university subject profiles

---

These university subjects are related to this career; check out their profiles on the Subjects library:

- [Social work and Community care](#)
- [Theology and Religion](#)

### Related career profiles

---

You may also be interested in:

- [Foster carer](#)
- [Community arts worker](#)
- [Social worker](#)
- [Care worker](#)

### Explore

---

#### Theology and Religion at uni:

[USA](#) [UK](#) [Canada](#) [Europe](#) [Asia](#) [Australasia](#) [Ireland](#)

UK jobs: 72,110

Nottinghamshire jobs: 1,084 (12th of 214 UK LEAs)

Top 5 LEAs: Hampshire (2,312), Hertfordshire (1,906), Surrey (1,851), Essex (1,850), Kent (1,746)

### UK Salary

#### Welfare professionals n.e.c. (SOC4)

UK annual median: £29,717

#### Welfare professionals (SOC3)

[Back to Top](#)

UK annual median: £35,289

East Midlands annual median: £29,835

Top 3 regions: Scotland (£39,958), Isle of Man (£36,637), North West (£36,637)

### UK Prospects

---

## Business, media and public service professionals (SOC2)

UK growth: +11.8% from 2017 to 2027, creating 219,107 jobs

East Midlands growth: +13.3% from 2017 to 2027, creating 14,224 jobs

### What is SOC?

---

Hourly median: \$23.63

Annual median: \$49,150

## Subject of the week

# Health and social care

**Subject rep: Morgan Fellows**  
Email: 4404mofe16@toothillschool.co.uk

**What do you study?**  
**In year 12:**  
-unit 1: equality, diversity and rights (exam)  
-unit 2: building positive relationships (coursework)  
-unit 3: the anatomy and physiology of the body  
**In year 13:**  
-prepare a report on nutrition for health (coursework)  
-mental health unit: supporting people with mental health conditions (coursework) health, safety and security (coursework)  
60% examination/ 40% coursework

**Dare to know:**  
The ethos at tooth hill college is 'dare to know' which serves as a challenge for students to be inquisitive and to explore wider knowledge for their subjects and beyond. Ways of exploring this wider knowledge would be through podcasts, ted talks, documentaries, books etc.  
**Health and social care 'dare to know' examples:**  
-Help (channel 4 & Netflix film)  
-Hidden voices podcasts  
-NICE talks podcasts

**Where can health and social care lead you?**  
University courses: adult nursing/mental health nursing/applied social work/health, social and child care  
Apprenticeships: youth work and community development/child care/child and family health and wellbeing  
Health and social care can open up a lot of career paths like social work, adult nurse, occupational therapist, midwifery, counsellor, support workers, psychologist and so much more.

**Why study health and social care?**  
In health and social care, you study a wide range of topics that range from how to promote equality, respect diversity and support individuals' rights to how to communicate and build relationships with individuals. Over the two years, through the content and coursework, you will find yourself gaining so much useful and interesting information, which will help open up so many opportunities in later life, whether that's university, apprenticeship or a career in the health and social care sector. It is an interesting, exciting and challenging course that leads to a variety of opportunities for later life.

## National Apprenticeship Week / ASK programme



### **National Apprenticeship Week / ASK Programme**

Once again, the ASK Programme are hosting a series of free events during National Apprenticeship Week, please see below for a list of our events and a link to Eventbrite to register. Our events are for students, parents/carers and teachers, feel free to share.

#### **Monday 6<sup>th</sup> February – Launch Day**

##### **16:30 “Welcome to the World of Apprenticeships”**

Eventbrite Link - <https://www.eventbrite.co.uk/e/welcome-to-the-world-of-apprenticeships-1630pm-tickets-482331956867>

##### **18:00 “Welcome to the World of Apprenticeships”**

Eventbrite link - <https://www.eventbrite.co.uk/e/welcome-to-the-world-of-apprenticeships-6pm-tickets-482974157707>

##### **19:00 “Welcome to the World of Apprenticeships”**

Eventbrite link - <https://www.eventbrite.co.uk/e/welcome-to-the-world-of-apprenticeships-1900-tickets-483798423107>

#### **Tuesday 7<sup>th</sup> February – Employers**

##### **16:00 “Meet the Employer Unilever”**

Eventbrite link - <https://www.eventbrite.co.uk/e/the-unilever-apprenticeship-program-tickets-515036015587>

##### **18:00 “Meet the Employer - Coventry Council Apprenticeships”**

Eventbrite link- <https://www.eventbrite.co.uk/e/meet-the-employer-coventry-council-apprenticeships-6pm-tickets-489662743447>

##### **18:00 “Apprenticeships with West Midlands Police PC David Manns & PC Amy Davies”**

Eventbrite link- <https://www.eventbrite.co.uk/e/apprenticeships-with-west-midlands-police-pc-david-manns-pc-amy-davies-registration-507575270297>

**18:00 “Apprenticeships with Doc Martens”**

Eventbrite link - <https://www.eventbrite.co.uk/e/meet-the-employer-doc-martens-tickets-507542371897>

**Wednesday 8<sup>th</sup> February – Apprentices**

**17:00 “Meet the Apprentice from Doc Martens**

Eventbrite Link - <https://www.eventbrite.co.uk/e/meet-the-apprentice-doc-martens-tickets-507602060427>

**17:30 “Meet the Apprentice – Digital Marketing with John Francis”**

Eventbrite link- <https://www.eventbrite.co.uk/e/meet-the-apprentice-digital-marketing-with-john-francis-tickets-510508202777>

**18:00 “Food for thought! Talking about Apprenticeships with Mondelez International”**

Eventbrite link- <https://www.eventbrite.co.uk/e/food-for-thought-talking-about-apprenticeships-with-mondelez-international-registration-514822075687>

**Thursday 9<sup>th</sup> February – T Levels**

**18:00 “Welcome to the world of T Levels”**

Eventbrite link - <https://www.eventbrite.co.uk/e/welcome-to-the-world-of-t-levels-6pm-tickets-484399340467>

**Friday 10<sup>th</sup> February – Celebrations**

**14:00 “Celebration of Apprentices- Christa Bridges’ journey with PebblePad”**

## YEAR 8 ONLY OUTREACH NEWS

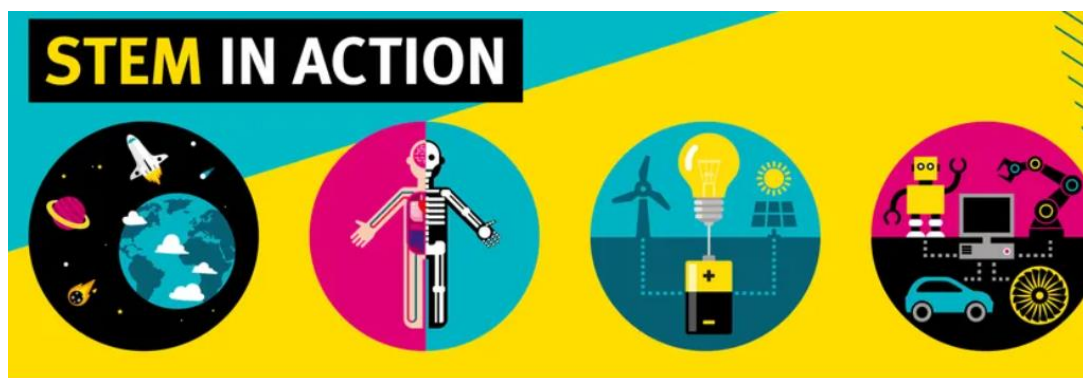


### January 2023 edition

Welcome to the latest edition of our Outreach newsletter - filled with events, resources and opportunities from across Imperial and beyond.



### Secondary Schools



**Explore our [STEM In Action Series](#) and our new featured researcher!  
Free, self-paced online activities for Years 7 to 9**

Learn about how scientists at Imperial College London are working to



understand climate change and the effects it is having on crops and ecosystems.

[STEM in Action](#) is an online resource with four themed modules including videos and activities that can be done at home or in school.

Explore our modules - The Human Body, Energy and Sustainability, the Environment and Beyond Our Planet.

This month in the Beyond Our Planet module learn all about our new featured researcher, [Mark Boyd](#). Mark talks about his research on space dust and what it can tell us about our solar system and Earth's geological history.

You can also learn about impact craters with our new [meteorite activity](#) this month.

Get Involved!

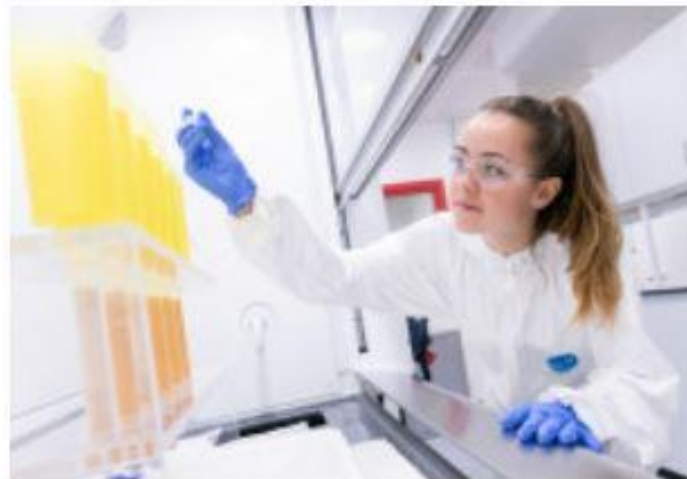


**ExpertEd: Online Family events!**  
**For Parents and Students Years 5 to 8**

ExpertEd is a new outreach programme that aims to bring expertise from workplaces and academia to all. Their resources and speakers aim to inspire children of all backgrounds to pursue educational and career opportunities.

- **So, You Want To Be A Linguist?** (Years 5 – 8) - Ever wanted to be able to speak other languages? Explore the wonderful world of language in this series for parents and children and unlock a whole world of linguistic opportunity.

The first session will take place on Tuesday 28 February 2023 at 7pm on Zoom. Register to join on the [website](#).



**If you have any comments or feedback on the Newsletters please email [ffarmer@toothillschool.co.uk](mailto:ffarmer@toothillschool.co.uk) and not reply to this email as these Newsletters are sent from a no reply email address.**

**Thank you**